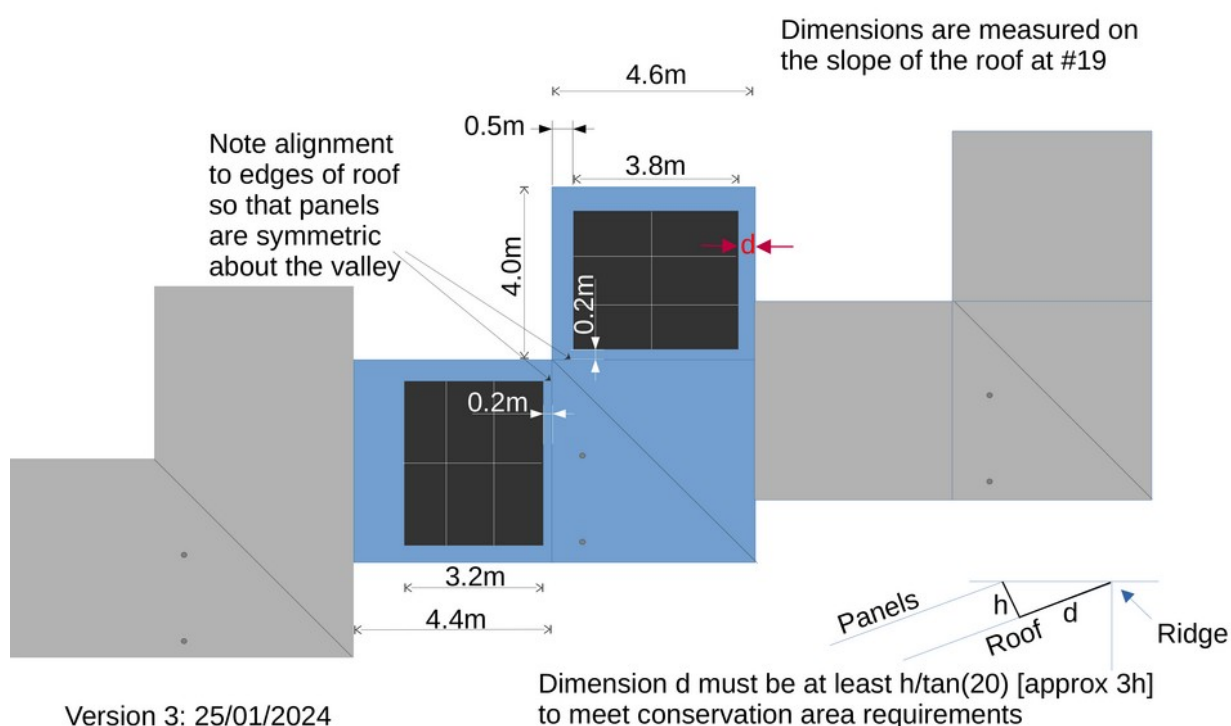


Proposed Solar PV installation at 2, 19 and 23 Cedar Chase

These three houses would like to install solar panels following the scheme agreed at the AGM in 2023. The layout will be identical for each house (allowing for house 2 being a mirror-image of the other two). All will use identical REC TwinPeak 5 black PV panels, and all will run the cables down the back of the house very close to the bedroom and kitchen windows. All three houses will put the inverter and battery in the utility room / bin-store or at ground level at the back of the house so that part will be invisible from outside.

Here is a plan of the proposed panel layout. The placement has changed slightly from the reference design following detailed measurement and advice from the installer, Jim Ingram, to allow future installs more flexibility to choose different panels while looking much the same. The bottom edge of the panels will be about two slates above the edge of the roof.



Version 3: 25/01/2024

Here is the cable route down the back of the house. Number 2 is shown but the others will be mirror-image identical, using black conduit in each case.

